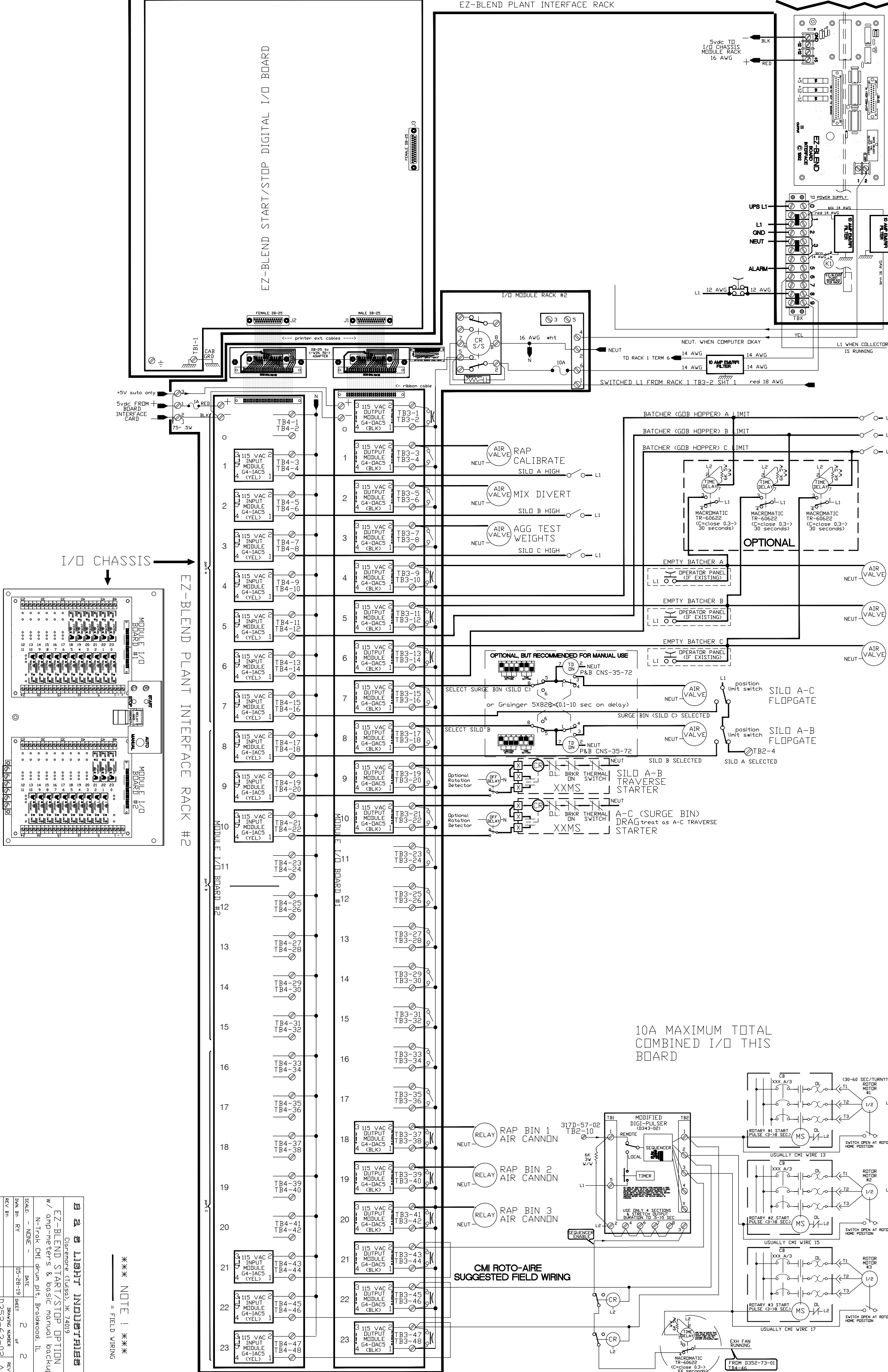


EZ-BLEND PLANT INTERFACE RACK

EZ-BLEND START/STOP DIGITAL I/O BOARD



10A MAXIMUM TOTAL COMBINED I/O THIS BOARD

CMI ROTO-AIRE SUGGESTED FIELD WIRING

REV. BY	RY	DATE	05-28-19	SHEET	2	OF	2
REV. NO.				DRAWING NUMBER	D352-63-02		

B & B LIGHT INDUSTRIES
 Claremore (Tulsa), OK 74019
 EZ-BLEND START/STOP OPTION
 w/amp meters & basic manual backup
 N-Trak CMI drum plnt., Braidwood, IL

*** NOTE ! ***
 = FIELD WIRING