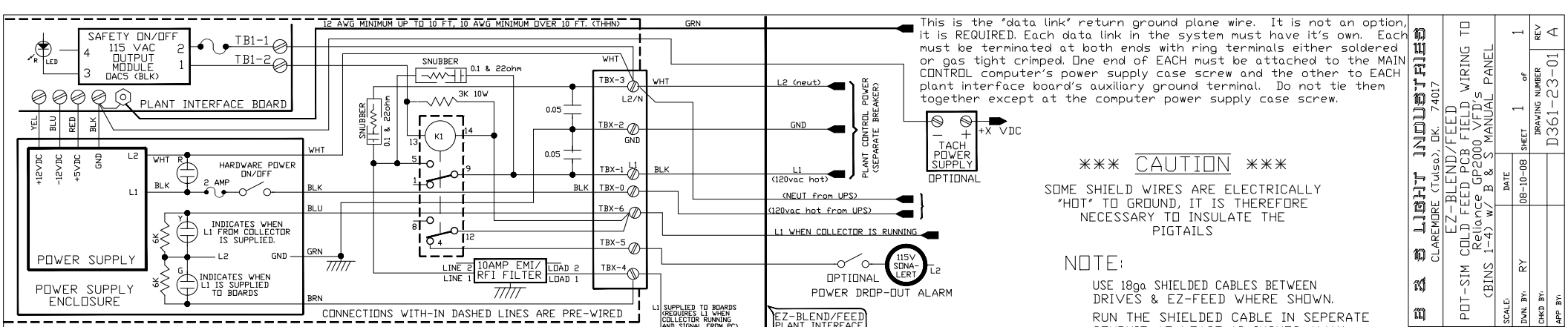


EZ-FEED POTENTIOMETER/FREQUENCY I/O BOARD #1



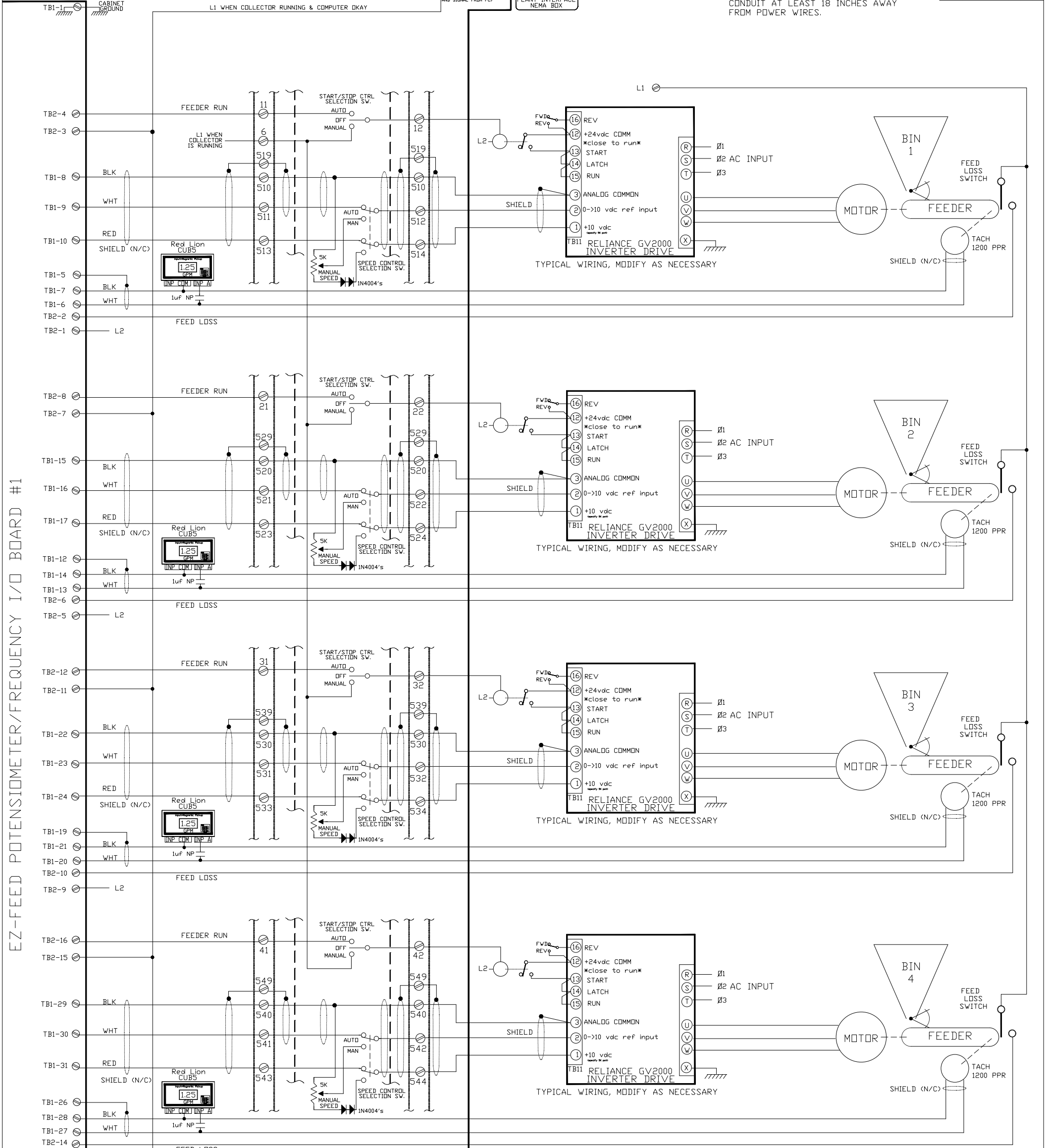
***** CAUTION *****

SOME SHIELD WIRES ARE ELECTRICALLY "HOT" TO GROUND, IT IS THEREFORE NECESSARY TO INSULATE THE PIGTAILS

NOTE:

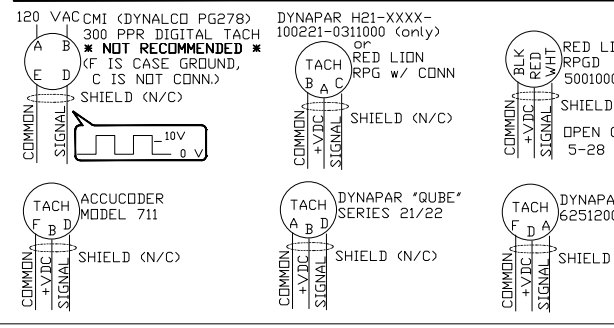
USE 18ga SHIELDED CABLES BETWEEN DRIVES & EZ-FEED WHERE SHOWN. RUN THE SHIELDED CABLE IN SEPARATE CONDUIT AT LEAST 18 INCHES AWAY FROM POWER WIRES.

| | |
|---|-------------------------------------|
| LIGHT INDUSTRIES CLARENDON (Tulsa), OK. 74017 | |
| EZ-BLEND/FEED POT-SIM COLD FEED PCB FIELD WIRING TO Reliance GV2000 VFD's (BINS 1-4) w/ B & S MANUAL PANEL | DRAWING NUMBER D361-23-01 |
| SCALE 1 of 1 | REV A |
| DATE 08-10-08 | SHEET 1 |
| DWN BY RY | CHK BY RY |
| APP BY RY | APP BY RY |



| SINGLE CHANNEL SHAFT ENCODERS (USUALLY CURRENT SINK) | | | | | |
|---|---------------------|----------------|-----------------------------|--------------------|---------------------|
| (Most have MS3102E-14S-6P connectors, use MS3106A-14S-6S mating connectors) | | | | | |
| PIN | DYNALCO (CMI) PG278 | RED LION RFG's | DYNAPAR "GUBE" SERIES 21/22 | DYNAPAR 6251200010 | ACCUCODER MODEL 711 |
| A | 120 VAC | PWR SOURCE | SIGNAL COMMON | SIGNAL OUT | POWER SOURCE |
| B | 120 VAC | COMMON | POWER SOURCE | POWER SOURCE | POWER SOURCE |
| C | NO CONNECTION | SIGNAL OUT | CASE GROUND | CASE GROUND | SIGNAL OUT |
| D | SIGNAL OUTPUT | SIGNAL OUT | SIGNAL OUT | POWER SOURCE | SIGNAL OUT |
| E | SIGNAL COMMON | SIGNAL OUT | SIGNAL OUT | SUPPLY COMMON | SUPPLY COMMON |
| F | CASE GROUND | CASE GROUND | SUPPLY COMMON | SUPPLY COMMON | SUPPLY COMMON |

TAIL-SHAFT TACH's
NOTE:
 RED LION DITAK-6 DIGITAL RPM DISPLAYS REQUIRE A ZENER DIODE (USUALLY 7V) IN SERIES WITH THEIR #2 INPUT WHEN USED WITH ANY ENCODERS THAT OUTPUTS OVER 5 V P-P SIGNAL.



ADDITIONAL EZ-BLEND OR FEED BOARDS AS REQUIRED

TO OTHER INTER-FACE BOARDS AS REQUIRED.